

4a-5a

2 bedrooms

2 baths

1,050 square feet

balcony: 40 sf

Appliances and finish highlights:

Aster Cucine cabinetry

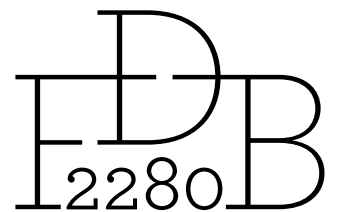
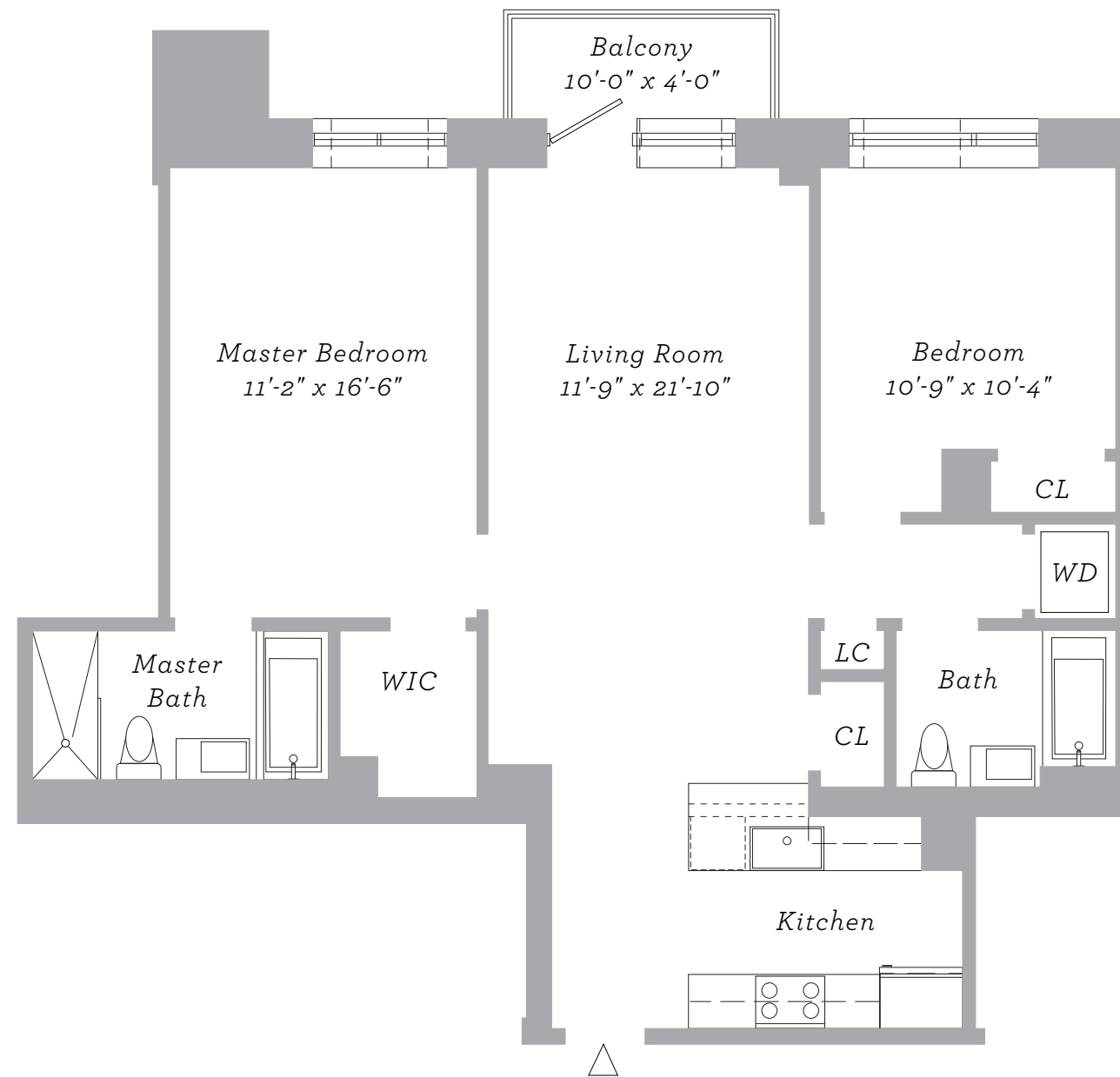
Electrolux Icon Series stainless steel appliances

Dornbracht brushed nickel fittings

Custom bathroom tiling

Lacava vanities

Miele Washer and Dryer



Sales Gallery 2276 Frederick Douglass Boulevard
at 122nd Street 212.521.5742 2280FDB.com

The Unit Layout, square footage and dimensions are approximate and subject to normal construction variances and tolerances. Square footages exceed the usable floor area. This floor plan is based on construction drawings. Minor inaccuracies between this floor plan and the actual Unit layout when built, will not excuse a Purchaser from completing the purchase of a Unit without abatement in price and without recourse against the Sponsor. Sponsor reserves the right to make changes in accordance with the Offering Plan. The complete offering terms are in an offering plan available from sponsor, file no. CD08-0202

Exclusive Marketing and Sales

